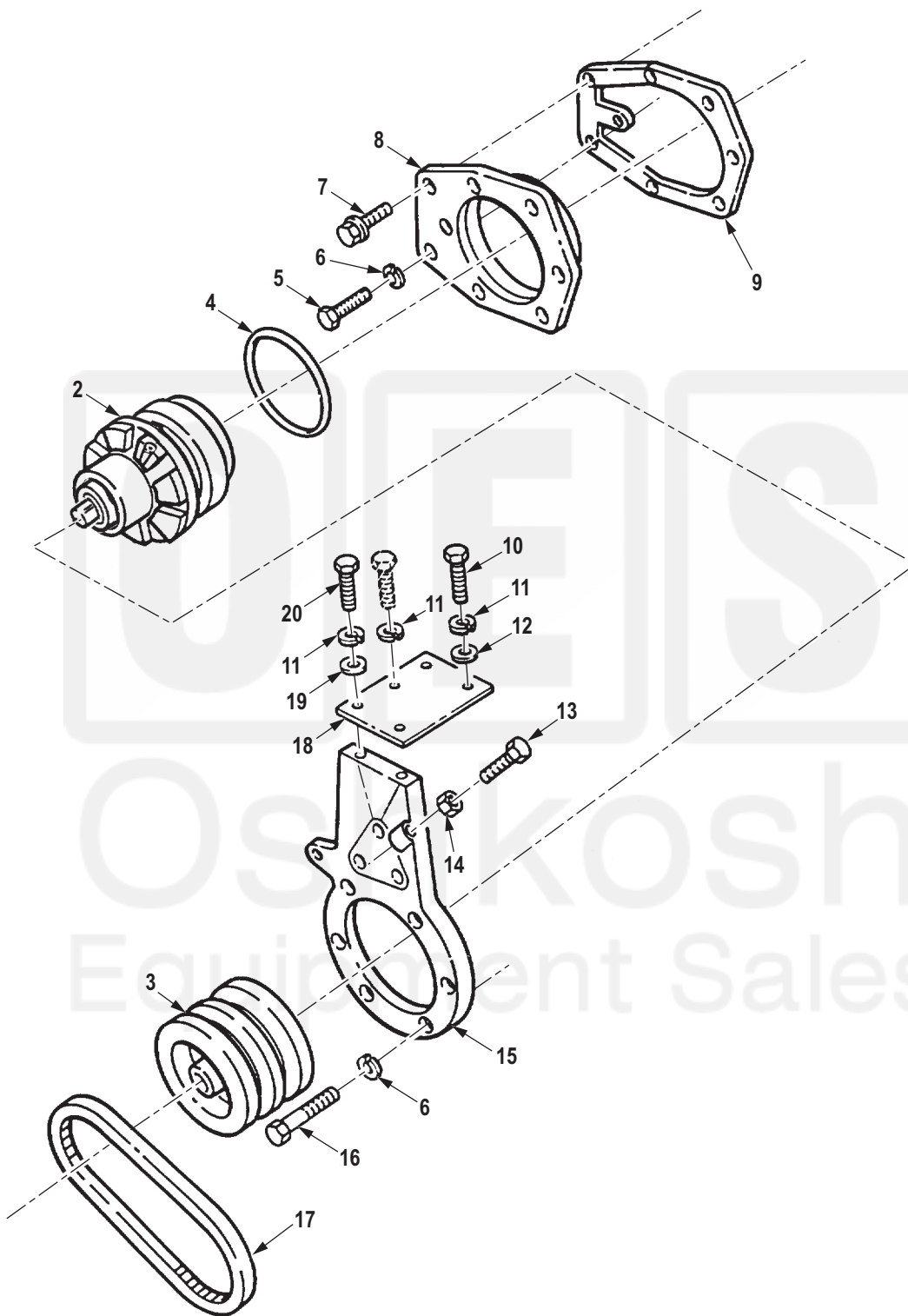


1
2-3



R0118DAA

Figure 118. Water Pump Assembly, Seals, and Mounting Hardware (M939, M939A1).

(1) ITEM NO.	(2) SMR CODE	(3) NSN	(4) CAGEC	(5) PART NUMBER	(6) DESCRIPTION AND USABLE ON CODE (UOC)	(7) QTY
GROUP 0504 WATER PUMP.						
FIG. 118. WATER PUMP ASSEMBLY, SEALS, AND MOUNTING HARDWARE (M939, M939A1).						
1	PAFZZ	2930-00-890-2440	15434	AR4284	PUMP, COOLING SYSTEM UOC: DAC, DAD, DAE, DAF, DAG, DA H, DAJ, DAL, DAW, DAX, V14, V15, V16, V17, V18, V19, V20, V21, V22, V24	1
2	PAFZZ	2930-00-004-8420	15434	AR04283	. PUMP, WATER, ENGINE C UOC: DAC, DAD, DAE, DAF, DAG, DA H, DAJ, DAL, DAW, DAX, V14, V15, V16, V17, V18, V19, V20, V21, V22, V24	1
3	PAFZZ	3020-00-929-0713	15434	15496600	. PULLEY, GROOVE WATER PUMP UOC: DAC, DAD, DAE, DAF, DAG, DA H, DAJ, DAL, DAW, DAX, V14, V15, V16, V17, V18, V19, V20, V21, V22, V24	1
4	PAFZZ	5330-00-106-6369	15434	130240	GASKET PART OF KIT P/N 3011472 UOC: DAC, DAD, DAE, DAF, DAG, DA H, DAJ, DAL, DAW, DAX, V14, V15, V16, V17, V18, V19, V20, V21, V22, V24	1
5	PAFZZ	5305-01-210-1608	15434	106549	SCREW, CAP, HEXAGON H UOC: DAC, DAD, DAE, DAF, DAG, DA H, DAJ, DAL, DAW, DAX, V14, V15, V16, V17, V18, V19, V20, V21, V22, V24	1
6	PAFZZ	5310-00-261-7340	01276	202983	WASHER, LOCK UOC: DAC, DAD, DAE, DAF, DAG, DA H, DAJ, DAL, DAW, DAX, V14, V15, V16, V17, V18, V19, V20, V21, V22, V24	1
7	PAFZZ	5305-01-130-6100	15434	3010594	SCREW, CAP, HEXAGON H UOC: DAC, DAD, DAE, DAF, DAG, DA H, DAJ, DAL, DAW, DAX, V14, V15, V16, V17, V18, V19, V20, V21, V22, V24	1
8	PBFZZ	2930-00-408-9404	15434	130227	SUPPORT, PUMP, WATER UOC: DAC, DAD, DAE, DAF, DAG, DA H, DAJ, DAL, DAW, DAX, V14, V15, V16, V17, V18, V19, V20, V21, V22, V24	1
9	PAFZZ	5330-00-106-6370	15434	130226	GASKET WATER PUMP SUPPORT PART OF KIT P/N 3011472 UOC: DAC, DAD, DAE, DAF, DAG, DA H, DAJ, DAL, DAW, DAX, V14, V15, V16, V17, V18, V19, V20, V21, V22, V24	1
10	PAFZZ	5305-00-795-9343	15434	S-176	SCREW, CAP, HEXAGON H UOC: DAC, DAD, DAE, DAF, DAG, DA H, DAJ, DAL, DAW, DAX, V14, V15, V16, V17, V18, V19, V20, V21, V22, V24	2